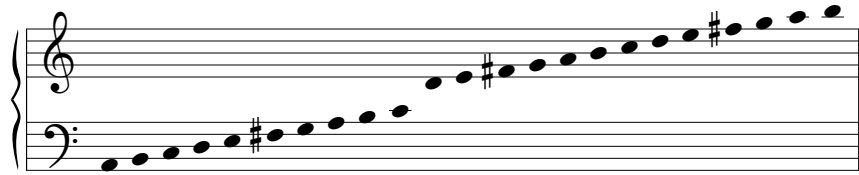


On This Day Earth Shall Ring

arr. Bryan L. Greer

Handbells used: 23



♩ = 88

9	10	8	18	10	28	8
---	----	---	----	----	----	---

A musical staff with a treble clef on top and a bass clef on the bottom. The notes are arranged in a sequence that ascends from the bottom line of the bass clef to the top line of the treble clef, with a sharp sign (#) appearing above several notes.

36	15	51	9	61	2
----	----	----	---	----	---

A musical staff with a treble clef on top and a bass clef on the bottom. The notes are arranged in a sequence that ascends from the bottom line of the bass clef to the top line of the treble clef, with a sharp sign (#) appearing above several notes.

64

6	4	75	11	86
---	---	----	----	----

A musical staff with a treble clef on top and a bass clef on the bottom. The notes are arranged in a sequence that ascends from the bottom line of the bass clef to the top line of the treble clef, with a sharp sign (#) appearing above several notes.

87

A musical staff with a treble clef on top and a bass clef on the bottom. The notes are arranged in a sequence that ascends from the bottom line of the bass clef to the top line of the treble clef, with a sharp sign (#) appearing above several notes.

94

96

2

3

102

103

f

106

mf

111

Sk

ff

Sk