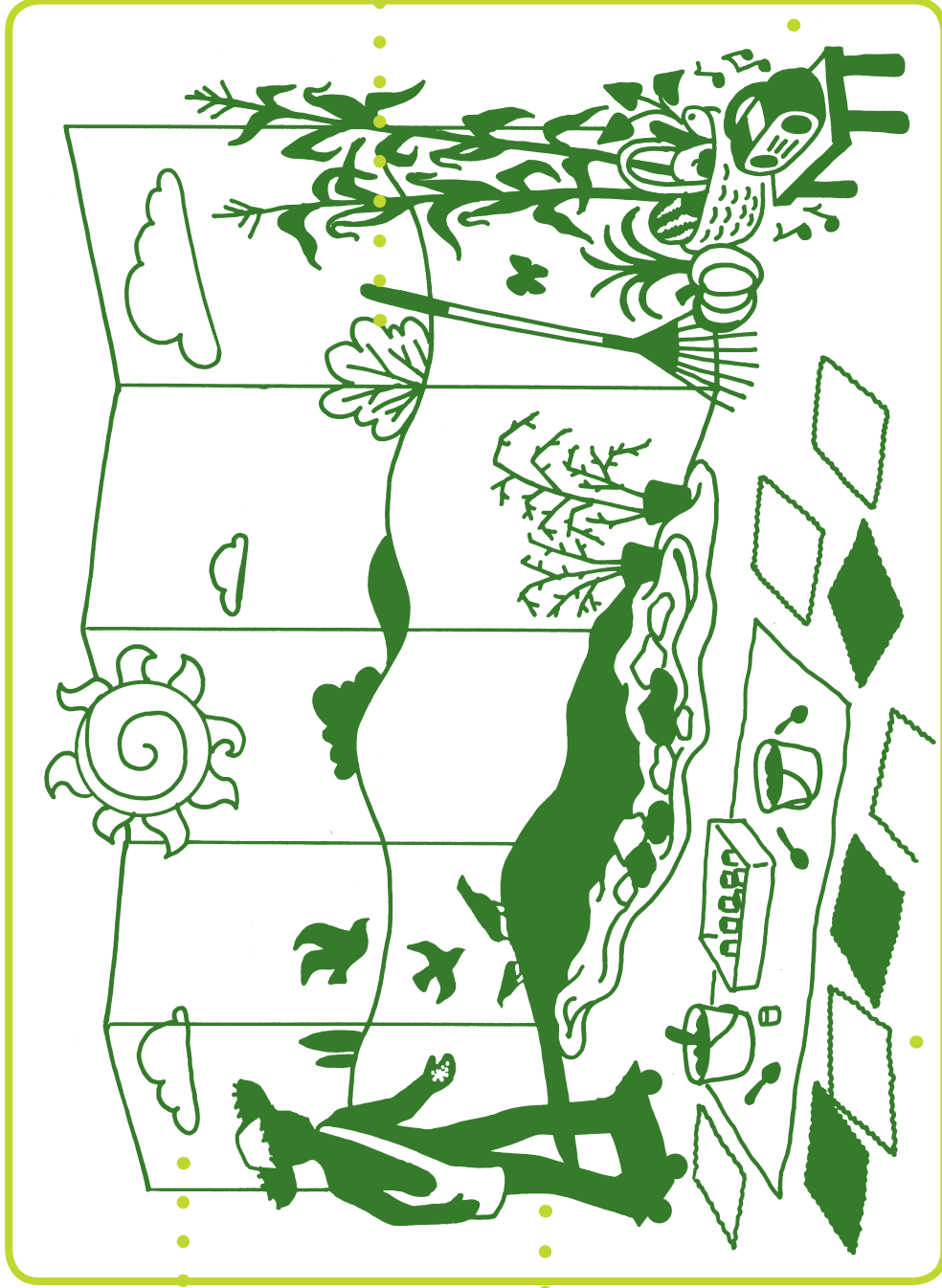


## DECORATING GUIDE

# Gather and Send Space



- Create a simple backdrop from panels that can be added each day so kids can watch the story grow.

- Build the Sower on casters so it's easy to move the cutout through the story each day.

- Attach three-dimensional elements to the background to reinforce elements from the story.

- Make sure music leaders have space to play, or set up a music player or sound equipment.

- Adapt the decorations and setup for your church. This space can work many ways—whether you have chairs, pews, or carpet squares!