

*Ensemble Setting of
Holy Communion:
All Creation Sings
Setting 12*

*for assembly and piano with opt. melody, descant,
bass instruments, guitar, and handbells*

Arranged by Anne Krentz Organ

This ensemble setting is designed to be as flexible as possible. While the instrumental parts are written to fit together, it's not necessary to include all of them; even one of the parts would be an effective addition to enliven the keyboard accompaniment.

The ranges of the extracted parts were adjusted in consideration of common instruments, but further modifications may be necessary depending on the skill level of the player or particular needs of the instrument. The Melody part in C is presented in two different extractions: lower C instruments should read from the “Melody in C / Guitar” part, and higher C instruments should read from the “Melody in C, upper octave” part.

Ensemble Setting of Holy Communion: All Creation Sings Setting 12
Arranged by Anne Krentz Organ

Arrangement copyright © 2021 Augsburg Fortress. All rights reserved. Unless otherwise noted, no part of this book may be reproduced in any manner without prior written permission from the publisher or from the other copyright holders. Write to: Permissions, Augsburg Fortress, P.O. Box 1209, Minneapolis, MN 55440-1209.

Acknowledgements

Text and music of Holy Communion from Setting 12 of *All Creation Sings: Evangelical Lutheran Worship Supplement*, copyright © 2020 Augsburg Fortress.

Kyrie; Cantic of Praise: My Soul Proclaims Your Greatness; Gospel Acclamation; Lenten Acclamation; Holy, Holy, Holy; Lamb of God; and Be Known to Us, Lord Jesus, music by Anne Krentz Organ, copyright © 2020 Augsburg Fortress.

Cantic of Praise: Glory to You, God, text by Susan Palo Cherwien and music by J. Bert Carlson; and text of Cantic of Praise: My Soul Proclaims Your Greatness, from *With One Voice: A Lutheran Resource for Worship*, copyright © 1995 Augsburg Fortress.

Texts prepared by the English Language Liturgical Consultation (ELLC, 1988) are acknowledged:
“Holy, Holy, Holy,” “Lamb of God.”

Editor: David Sims
Engraver: Dave Matsen, Matsen Music

The paper used in this publication meets the minimum requirements of American National Standard for Information Sciences—Permanence of Paper for Printed Materials, ANSI Z329.48-1984.

Printed in the U.S.A.
ISBN 978-1-5064-7994-1

25 24 23 22 21 1 2 3 4 5 6 7 8 9 10

Contents

<i>Full Score</i>	Kyrie	4
	Canticle of Praise: Glory to You, God	6
	Canticle of Praise: My Soul Proclaims Your Greatness	10
	Gospel Acclamation	12
	Lenten Acclamation	13
	Holy, Holy, Holy	14
	Lamb of God	16
	Be Known to Us, Lord Jesus	18
<i>Reproducible Scores</i>	Descant in C	20
	Descant in B ^b	23
	Descant in E ^b	26
	Descant in F	29
	Descant in Alto clef	32
	Melody in C / Guitar	35
	Melody in C, upper octave	40
	Melody in B ^b	43
	Melody in E ^b	46
	Melody in F	49
	Melody in Alto clef	52
	Melody in Bass clef	55
	Bass	58
	Handbells	61

Kyrie

Handbells used: 5

Optional introduction

Descant

Melody

Bass

Handbells

Assembly

Capo 3: Am Cm Dm Fm Am Cm Dm Fm E G Am Cm Dm/A Em/A Am Fm/C Gm/C Cm

Piano

6

Ky - ri - e e - lei - son. Lord, have mer - cy.

Am Cm Dm Fm Am Cm Dm Fm F Ab C Eb G/B Bb/D

Canticle of Praise: Glory to You, God

Handbells used: 7



Optional introduction

Descant

Melody

Bass

Handbells

Assembly

Piano

Optional introduction

Capo 3: G Bb

D/F# F/A

G Bb

C Eb

Am7 Cm7

D F

2

3

1 Glo - ry to you, God, for yours is the earth; yours is the

2 Glo - ry to you, God, for yours is the earth; yours the ho -

3 Glo - ry to you, God, for yours is the earth; yours the a -

G Bb

G/B Bb/D

C Eb

D sus F sus

D F

CM7 EbM7

Canticle of Praise: My Soul Proclaims Your Greatness

Handbells used: 6



Optional introduction

Descant

Melody

Bass

Handbells

Assembly

Piano

Capo 3: Am Dm7 C/E F C BbM7 FM7 Gm7 C
Cm Fm7 Eb/G Ab Eb DbM7 AbM7 Bbm7 Eb

Refrain

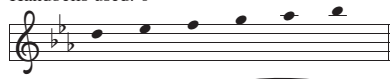
4 5

My soul pro-claims your great-ness, O Lord; I sing my Sav-ior's praise! Great

Am Dm7 C/E F Am7 Dm7 Em7 Asus Am
Cm Fm7 Eb/G Ab Cm7 Fm7 Gm7 C sus Cm

Holy, Holy, Holy

Handbells used: 6



Optional introduction 3

Descant

Melody

Bass

Handbells

Assembly

Optional introduction
Capo 3: C Eb G Bb

Ho - ly, ho - ly, ho - ly Lord, God of pow'r and God of might,

C Eb Em7 Gm7 F Dm/F G
Eb Gm7 Ab Fm/Ab Bb

Piano

7

heav - en and earth are full of your glo - ry. Ho - san - na in the high - est.

C Em7 F Dm/F G Am Em7/G FM7 Gsus G7
Eb Gm7 Ab Fm/Ab Bb Cm Gm7/Bb AbM7 Bbsus Bb7

Lamb of God

Handbells used: 7



Optional introduction 3

Descant

Melody

Bass

Handbells

Assembly

Lamb of God, you take a - way the

Optional introduction
Capo 3: G B♭ D/F# F/A C2 Eb2 C/D Eb/F D F G B♭ Bm7 Dm7 C Eb G B♭

Piano

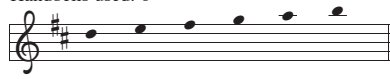
5

sin of the world; have mer - cy on us. Lamb of God, you take a - way the

Am Cm D F G B♭ C Eb Am7 Cm7 Dsus Fsus D F G B♭ Bm7 Dm7 C Eb G B♭

Be Known to Us, Lord Jesus

Handbells used: 6



Optional introduction

Descant

Melody

Bass

Handbells

Assembly

Optional introduction
Capo 2: C D Am7 Bm7 Dm Em F2 G2 C D C sus D sus C D

Piano

6 7

Be known to us, Lord Je - sus, in the break - ing of the bread. Al - le - lu - ia, al - le -