

Adeste fideles

Flute
Oboe

B \flat Clarinet
Tenor Saxophone

E \flat Alto Saxophone

B \flat Trumpet

Horn in F

Trombone
Tuba

Keyboard

This system contains the first six staves of the instrumental accompaniment. The instruments are: Flute/Oboe, B \flat Clarinet/Tenor Saxophone, E \flat Alto Saxophone, B \flat Trumpet, Horn in F, Trombone/Tuba, and Keyboard. The music is in 4/4 time and begins with a key signature of one sharp (F#).

This system contains the second six staves of the instrumental accompaniment. It begins with a box containing the number 7, indicating the start of the seventh measure. The instruments and key signature remain the same as in the first system.

Evangelical Lutheran Worship #283
Tune: attr. John Francis Wade, 1711–1786

Hymns for Ensembles, vol. 1, ISBN 978-0-8066-9808-3
Copyright © 2010 Augsburg Fortress. All rights reserved.
Duplication in any form prohibited without publisher's written permission.

Carol

Flute
Oboe

B^b Clarinet
Tenor Saxophone

E^b Alto Saxophone

B^b Trumpet

Horn in F

Trombone
Tuba

Keyboard

6

6

6

The image shows a musical score for a piece titled "Carol". The score is arranged for a concert band or ensemble. It consists of seven staves: Flute/Oboe, B^b Clarinet/Tenor Saxophone, E^b Alto Saxophone, B^b Trumpet, Horn in F, Trombone/Tuba, and Keyboard. The music is in 3/4 time and the key signature has two flats (B^b and E^b). The score is divided into three systems. The first system contains the first five measures. The second system starts with a measure number "6" in a box and contains measures 6 through 10. The third system also starts with a measure number "6" in a box and contains measures 11 through 15. A large, semi-transparent watermark "Sample" is overlaid diagonally across the entire page.

Evangelical Lutheran Worship #282
Music: Richard S. Willis, 1819–1900

Hymns for Ensembles, vol. 1, ISBN 978-0-8066-9808-3
Copyright © 2010 Augsburg Fortress. All rights reserved.
Duplication in any form prohibited without publisher's written permission.

Carol

Melody

The Melody part consists of six staves of music. The first staff begins with a treble clef, a key signature of one flat (B-flat), and a 3/4 time signature. The music features a series of quarter and eighth notes, often beamed together, with some notes tied across bar lines. A large, semi-transparent watermark reading "Sample" is overlaid diagonally across the entire page.

Harmony

The Harmony part consists of two staves of music. The first staff begins with a treble clef, a key signature of one flat (B-flat), and a 3/4 time signature. The music features a series of quarter and eighth notes, often beamed together, with some notes tied across bar lines. A large, semi-transparent watermark reading "Sample" is overlaid diagonally across the entire page.

Evangelical Lutheran Worship #282
Music: Richard S. Willis, 1819–1900

Hymns for Ensembles, vol. 1, ISBN 978-0-8066-9808-3
Published by Augsburg Fortress. All rights reserved.

Permission is granted the purchaser to reproduce this composition for purchaser's local, non-sale use.

Carol

Melody



6



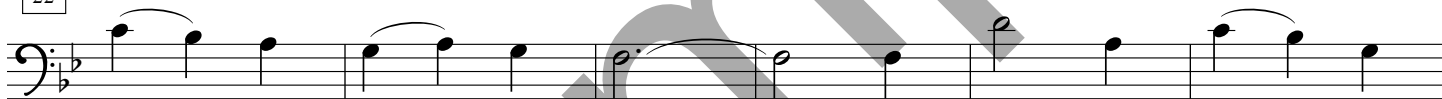
11



17



22



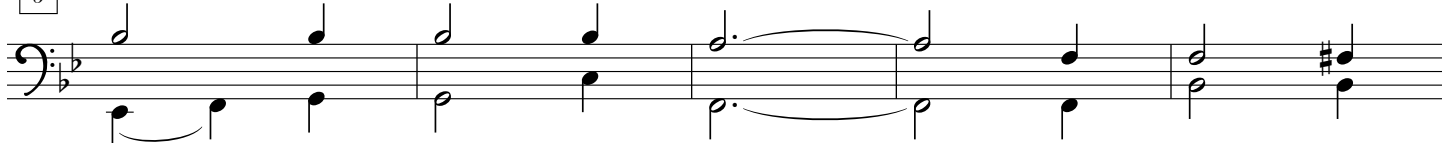
28



Harmony



6



Evangelical Lutheran Worship #282
Music: Richard S. Willis, 1819–1900

Hymns for Ensembles, vol. 1, ISBN 978-0-8066-9808-3
Published by Augsburg Fortress. All rights reserved.

Permission is granted the purchaser to reproduce this composition for purchaser's local, non-sale use.